

UNICA 1 - Unit 5
Penthouse

High-End Luxury
Apartments

New Development
Project

Alimos - Greece





THE BUILDING

KEY FEATURES

Location	: Alimos
Address	: 52 Erechtheiou
Levels	: 5
Apartments	: 6
Condition	: New development
Completion	: October 2023

This unique, exquisite and minimalistic apartment complex, with its own swimming pool, at the southern suburbs of Athens, has been radically redesigned and constructed to offer high-end luxury and comfort to its residents, in addition to being an attractive investment.

THE PENTHOUSE

This luxury duplex penthouse unit comes with unobstructed seaview from both floors, a 80m² private rooftop terrace with jacuzzi for exclusive use as well as designated indoor parking and storage space.

The apartment consists of:

- 4 Bedrooms
- 3 Bathrooms
- 1 WC
- Modern Kitchen
- Open Living Room
- 4 Large Balconies Front and Back

115.23m² Interior Space

80.40m² Rooftop Terrace

48.00m² Indoor Parking and Storage Room

EUR 900,000





KEY ELEMENTS OF RENOVATION

Full Facade Facelift

New Electrical and Plumbing Installations

Deluxe Bathroom and WC

Kitchen with Quality Appliances

Insulated Doors, Windows and Walls

Electrical Security Shutters

Wooden and Tiled Flooring

Suspended Ceilings with Hidden Lighting

Integrated Heating and Cooling

LIVING ROOM



Final design will be adjusted to fit exact apartment layout.
Images are for illustration only, materials and colour schemes may change.
Loose furniture not included.

LIVING ROOM



Final design will be adjusted to fit exact apartment layout.
Images are for illustration only, materials and colour schemes may change.
Loose furniture not included.

KITCHEN



Final design will be adjusted to fit exact apartment layout.
Images are for illustration only, materials and colour schemes may change.
Loose furniture not included.

BEDROOM 1 – LOWER FLOOR



Final design will be adjusted to fit exact apartment layout.
Images are for illustration only, materials and colour schemes may change.
Loose furniture not included.

BEDROOM 2 – LOWER FLOOR



Final design will be adjusted to fit exact apartment layout.
Images are for illustration only, materials and colour schemes may change.
Loose furniture not included.

BEDROOM 3 – LOWER FLOOR



Final design will be adjusted to fit exact apartment layout.
Images are for illustration only, materials and colour schemes may change.
Loose furniture not included.

BATHROOM 1 – LOWER FLOOR



Final design will be adjusted to fit exact apartment layout.
Images are for illustration only, materials and colour schemes may change.
Loose furniture not included.

BATHROOM 2 – LOWER FLOOR



Final design will be adjusted to fit exact apartment layout.
Images are for illustration only, materials and colour schemes may change.
Loose furniture not included.

BEDROOM – UPPER FLOOR



Final design will be adjusted to fit exact apartment layout.
Images are for illustration only, materials and colour schemes may change.
Loose furniture not included.

BATHROOM – UPPER FLOOR



Final design will be adjusted to fit exact apartment layout.
Images are for illustration only, materials and colour schemes may change.
Loose furniture not included.

WC – UPPER FLOOR



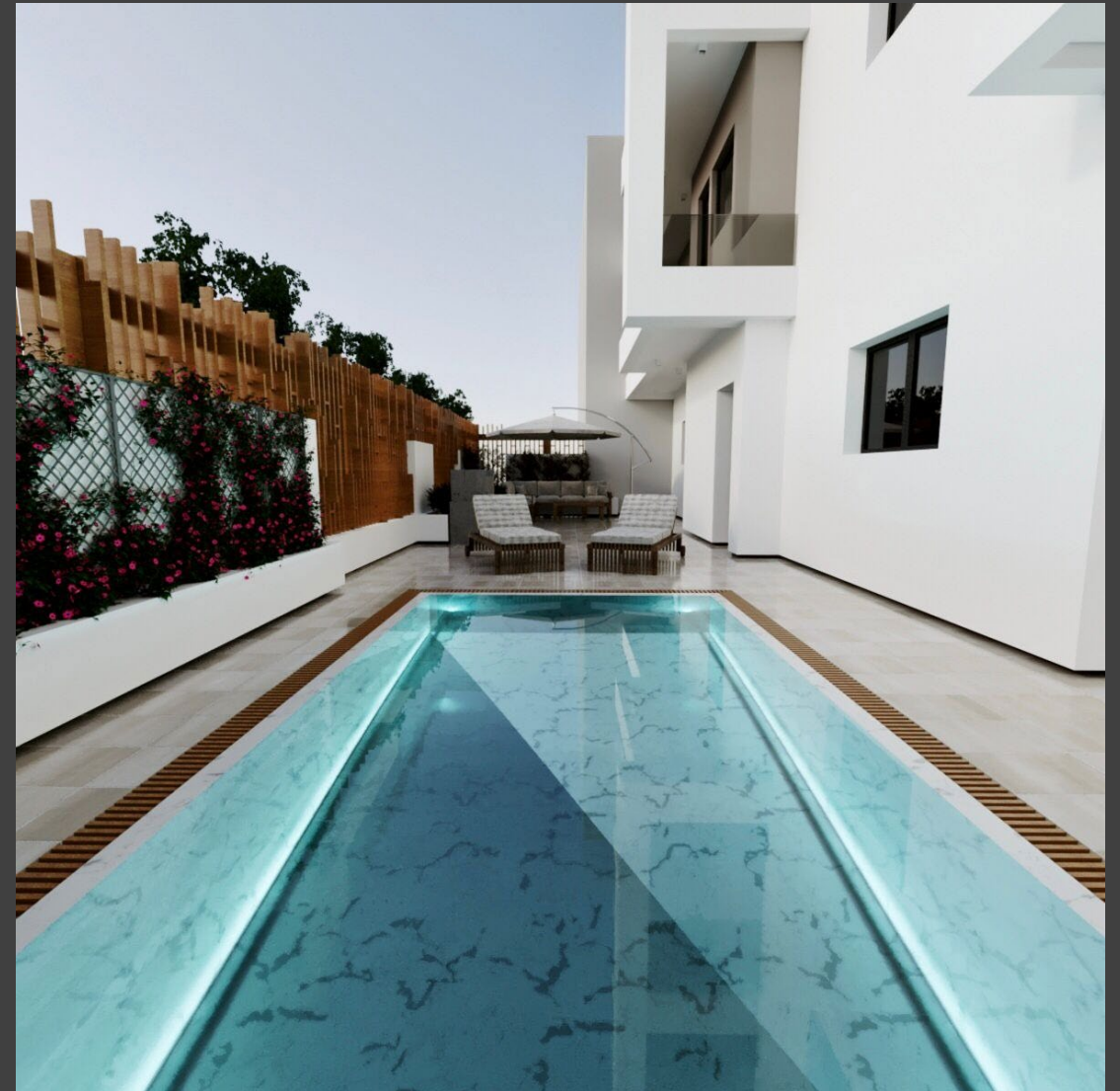
Final design will be adjusted to fit exact apartment layout.
Images are for illustration only, materials and colour schemes may change.
Loose furniture not included.

ROOFTOP TERRACE



Final design will be adjusted to fit exact apartment layout.
Images are for illustration only, materials and colour schemes may change.
Loose furniture not included.

THE GARDEN AND SWIMMING POOL



URBAN ELEGANCE

Special care for every architectural detail, contemporary design with emphasis on functionality.

Modern, premium materials coexist to synthesize into a harmonious completion, with vertical and horizontal surfaces integrating into an interesting game of volumes and effects.

Particular focus has been given to energy efficiency.

Promises to meet and exceed its residents' expectations.





MINIMALISTIC TOUCH

The overall mood is enhanced by the use of earthy colors and materials, giving a minimalistic, yet warm, sensation.

The suspended ceilings with hidden lighting, along with natural daylight, in all rooms of the apartments, create a cozy atmosphere.

OPENNESS & FLOW

These elegant apartments are designed to offer flexibility to its residents through a versatile solution that satisfies the needs of a contemporary lifestyle.

The open spaces reveal or conceal themselves according to their functional needs.



THE LOCATION



Alimos is considered one of the most attractive suburbs of southern Athens, which together with Glyfada and Vouliagmeni, is popularly referred to as the Athens Riviera.

The building is located in a green and safe area, close to shopping, entertainment and just a short walk from the sea, marinas and pristine, sandy beaches.

The area preserves a strong sense of community, with shops, taverns, coffee houses, restaurants and private beach clubs.

Athens Riviera has a mild and pleasant climate throughout the year and is known to be the warmest area in Continental Europe.